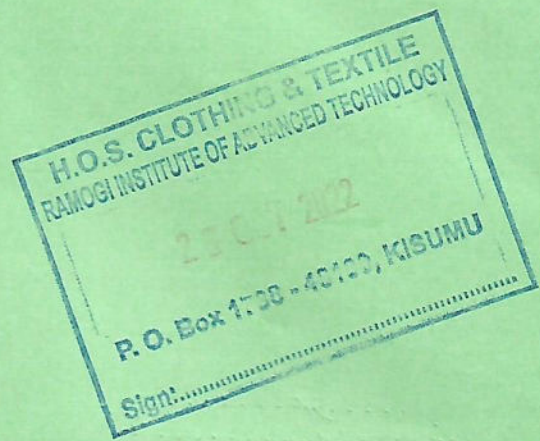


2803/304

**PATTERN CONSTRUCTION III
AND GRADING TECHNIQUES II
PRACTICAL**

June/July 2022

Time: 4 hours



THE KENYA NATIONAL EXAMINATIONS COUNCIL

**DIPLOMA IN FASHION DESIGN AND CLOTHING TECHNOLOGY
MODULE III**

PATTERN CONSTRUCTION III AND GRADING TECHNIQUES II PRACTICAL

4 hours

INSTRUCTIONS TO CANDIDATES

1. *You should have the following items for this examination:*

- (i) $\frac{1}{4}$ scale ruler/square;
- (ii) pencil (2H) and eraser;
- (iii) 30 cm ruler;
- (iv) French curves;
- (v) sheets of white photocopying paper (size A4);
- (vi) a pair of paper scissors;
- (vii) glue/sellotape;
- (viii) paper pins;
- (ix) tracing wheel;
- (x) tracing paper;
- (xi) calculator;
- (xii) string.

2. (i) *All stages of pattern development must be clearly shown.*

(ii) *All measurements used for grading must be shown at all grading points.*

This paper consists of 5 printed pages.

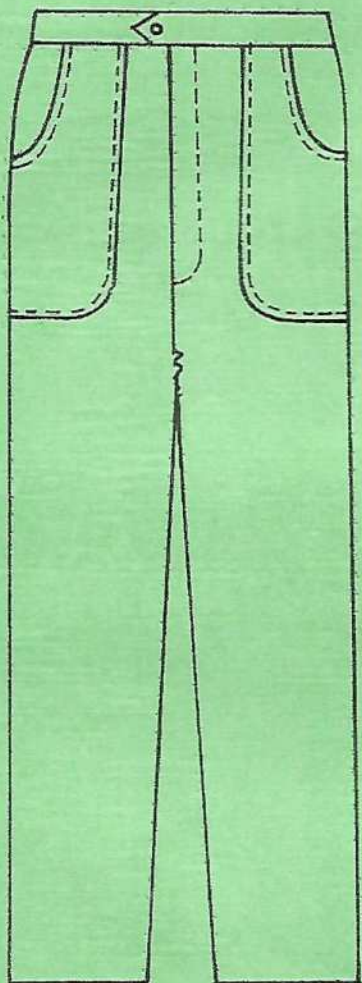
**Candidates should check the question paper to ascertain that
all the pages are printed as indicated and that no questions are missing.**

TASKS

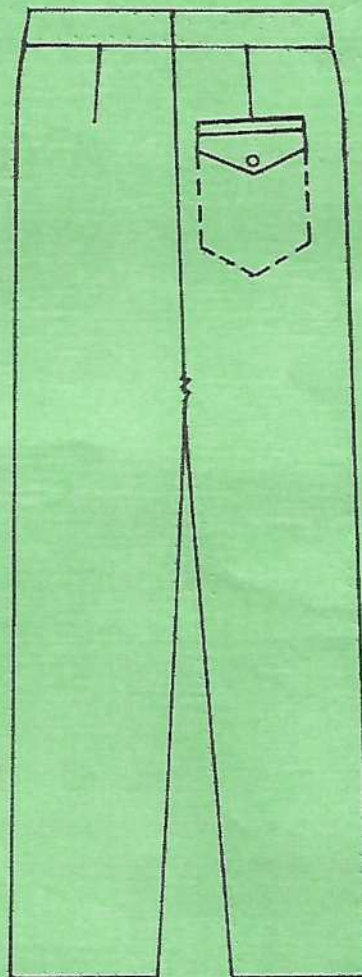
1. Trace out the bodice blocks provided and draft the one-piece sleeve block. (31 marks)

NB: Sleeve length = 60 cm

2. Trace out the trouser blocks provided and develop final patterns for the trouser style sketched below. (73 marks)



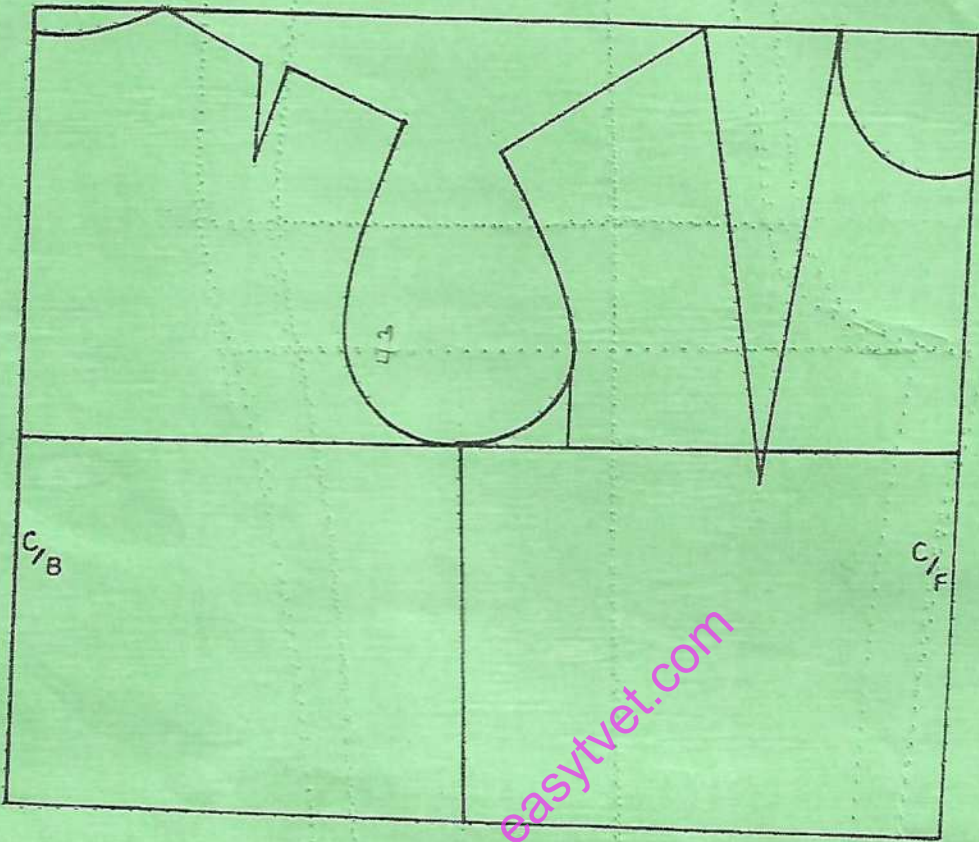
FRONT VIEW



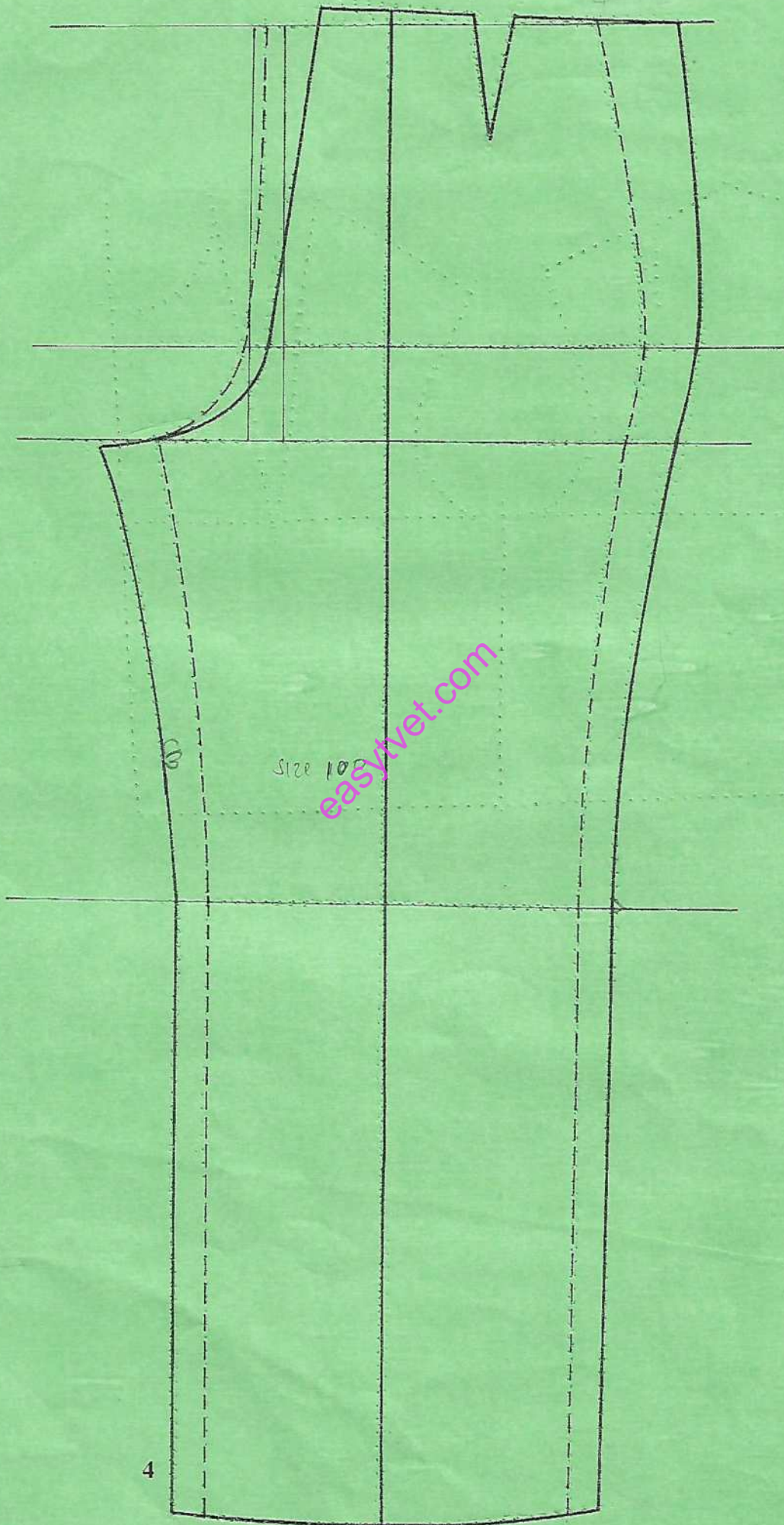
BACK VIEW

Measurements

Pocket depth	-	32 cm
Fly length	-	24 cm
Fly width	-	5 cm
Back pocket mouth	-	14 cm
Waistband depth	-	4 cm



$\frac{40.5}{2}$
 $\frac{40}{2}$
 $\frac{40}{2}$



3. Trace out the A-line skirt pattern provided and grade one size up.

(16 marks)



THIS IS THE LAST PRINTED PAGE.